

**Installation Instructions
Version 5.0**

D-CAM

1.1 System Requirements

Hardware Requirements

Pentium IV, higher or compatible processor.

- CPU 1.5 GHz or higher
- 1 GB RAM or higher
- 750 MB free harddisk space
- Memory Overload File min. 256 MB
- OPEN GL Graphics Card NVIDIA min. 256 MB. **ATI Graphic Cards are not supported.**
- 3-Button Mouse
- 1-2 USB-Ports for Hardlocks
- DVD - Drive

Software Requirements (Platform for DCAMCUT)

- WINDOWS 2000 Professional
- WINDOWS XP Professional
- Acrobat Reader 7.08 or later

1.2 Content of Delivery

Content

The Software Package contains:

- Installation-CD-ROM or DVD
- One or two Hardlocks
- User Manual DCAMCUT (optional)
- License file (*.lic) or License code CAM
- License file (*.lcm) or License code CAD

Modules

DCAMCUT will be delivered, depending on the order (refer to the delivery notes), with one of the following modules:

DCAMCUT BASIC

Is the DCAM-Module for

**2-Axis Machining + Standard Taper + NC-Browser
+ Template Module**

DCAMCUT BASIC+

Is the DCAM-Module for

**2-Axis Machining + Standard Taper + NC-Browser
+ Template Module + Ruled Surface Machining via
2 levels**

DCAMCUT PRO Is the DCAM-Module for
**4-Axis Machining + NC-Browser + Template
Module**

**DCAMCUT
EXPERT** Is the DCAM-Module for
**2-Axis Machining + NC-Browser + Approximation
Module + Template Module + Parametric Machining**

Additional Modules & Postprocessors can be enabled through separate license codes.

**DCAMCUT
DEMO-Version** - Without hardlock DCAMCUT will run in demo mode only. In demo mode all basic functions are available. NC-Output is disabled.

A demo installation can be registered to run in licensed mode with a valid license file & hardlock.

Attention! Coordinate output in NC-Files will be rounded to 1 sub-digit. All radii are pre-defined by 0,3 mm.

1.3 Pre-Installation Steps

Dongle: Keep the dongle for DCAMCAD / DCAMCUT in reach.

Do not place the dongles to USB-Ports before the installation has been completely finished!

Depending on your order 1 or 2 local / network dongles will be delivered with the software.

Pre-Settings: Close all open WINDOWS-Programs before running the installation.

2.1 Installation DCAMCUT SOLO-System

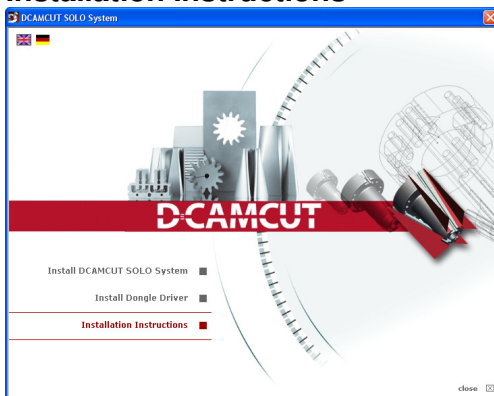
Setup



Place the Installation-CD/DVD to the DVD-Drive.

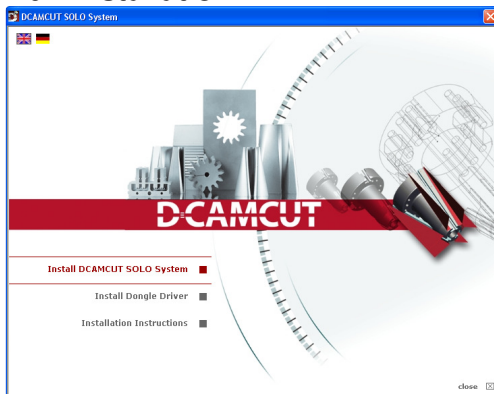
The Setup will run automatically. Select the setup language afterwards.

Installation Instructions



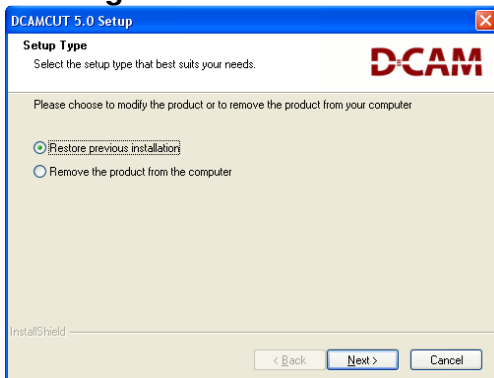
Read the installation instructions carefully before installing the software. Print a duplicate and keep it in reach of your hands in case you like to refer to the document again during the installation process.

Run Installation



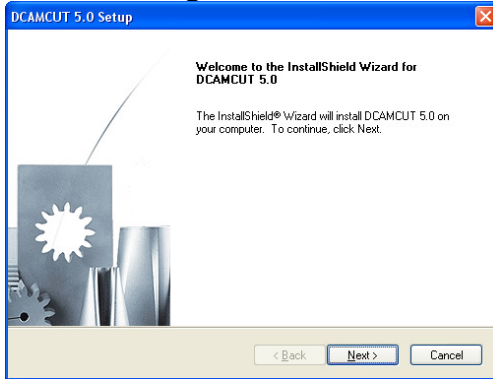
Select the option **Install DCAMCUT SOLO-System** to install DCAMCUT incl. CAD-Kernel to the system.

Existing Installation



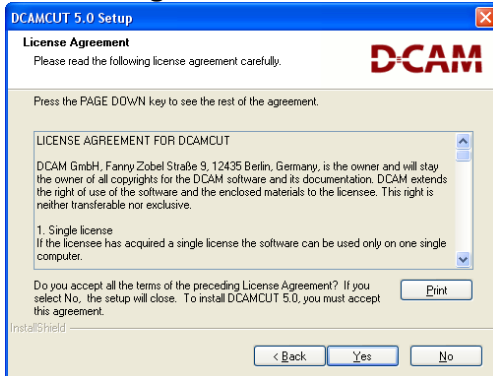
In case DCAMCUT SOLO-System is already installed to the system you will be asked if you like to restore this installation or remove the product from your computer.

Welcome Page



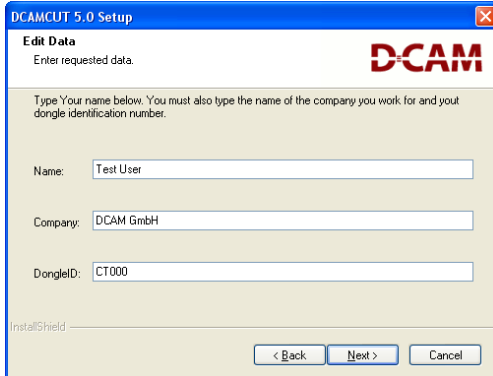
The DCAMCUT Installation Wizard will appear on the screen. Select the **Next** button to continue installation.

License Agreement



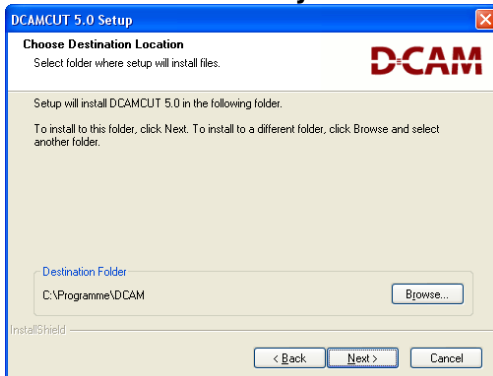
Read the License Agreement carefully and accept the conditions in case you agree to them by selecting the **Next** button from the dialog.

Installation Details



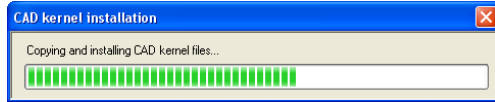
Fill in your name, the company name as well as your dongle ID (see shipping form or sticker on the delivered hardlock for details) to the Edit Data dialog and go on with **Next**.

Destination Directory



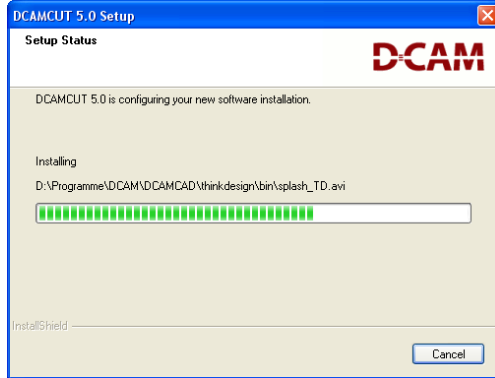
Choose the destination directory for the installation of DCAMCUT (default directory is C:\Programme\DCAM) and select **Next**.

Installation CAD-Kernel



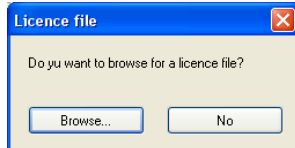
The CAD-Kernel will now be installed on the system and the installed components are going to be registered afterwards. This may take several minutes!

Installation DCAMCUT



The CAM-Components will now be installed and registered on the system. This may take several minutes!

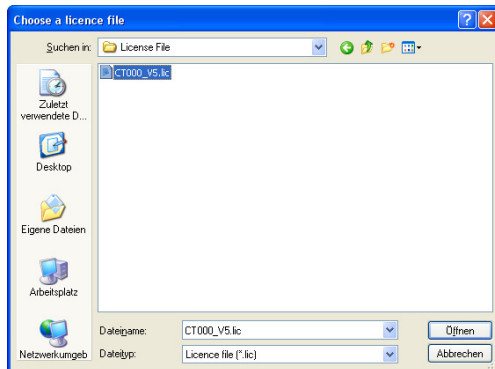
DCAMCUT License File



The setup will ask you to define a license file for DCAMCUT. In case you have already received the requested file click **Browse**.

If you do not have a valid license file go on with **No**.

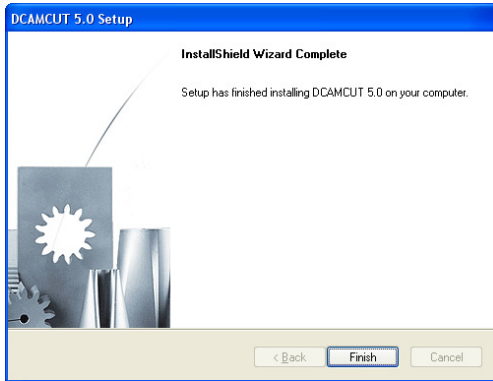
Choose License File



Select the license file (e.g. CT000_V5.lic) and select **Open** from the dialog.

If you do not have received a license file you can also unlock the system after the installation by entering the codes (see shipping form) manually. Please refer to point **2.4** to get more information about this.

Finish Installation



Select **Finish** from the dialog to exit the DCAMCUT Installation Wizard.

Exit Setup



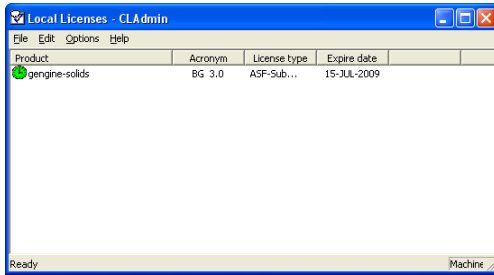
Select **Close** to exit the DCAMCUT Setup.

2.2 Install Hardlock / Dongle Apply Hardlock / Dongle

After the installation has been completed place the delivered Hardlocks / Dongles to free USB-Ports on your computer.

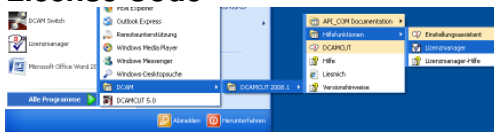
If the system will prompt that new hardware has been found and asks you for a related driver choose the option **Detect Driver Automatically**. If the related driver has been found and installed successfully a message will appear that the new hardware is now ready for use.

2.3 Product Licensing CAD-Kernel License File



If you have received a valid license key for the CAD-Kernel (e.g. by email) just double click on this *.lcm file. The CAD License-Manager will appear automatically and show the registered licenses.

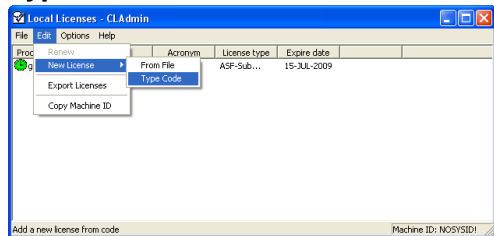
License Code



If you do not have received a license file you can also unlock the system by entering the codes (see shipping form) manually. To run the CAD License Manager choose **Start ->**

All Programs -> DCAM -> DCAMCUT 2008.1 -> Help Tools -> License Administrator or select **Help -> License Administrator** from the DCAMCUT main menu.

Type in Codes



Choose **Edit -> New License -> Type Code** from the main menu of the License Administrator and type in the code manually into the opened up dialog. Then select **OK** and exit the License Administrator.

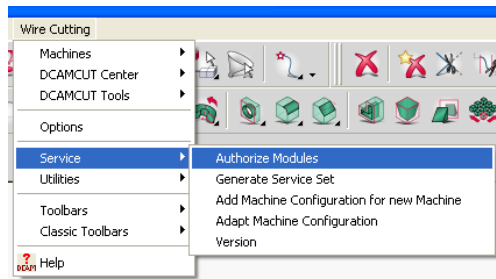


2.4 OPTIONAL – Manual Licensing DCAMCUT

Regularly the DCAMCUT setup will prompt you during the installation process to specify the license file (*.lic).

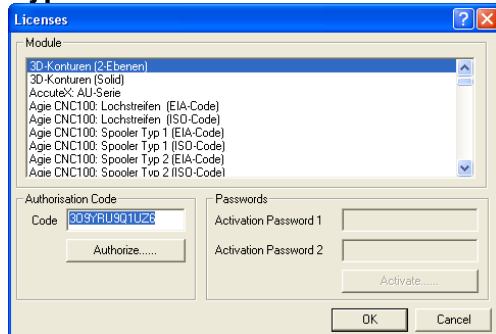
If you do not have a valid license file during the setup you can also unlock the system after the installation by entering the codes (see shipping form) manually. Proceed as follows to register the Wire-EDM functionality manually.

Manual Authorization



Select **Wire Cutting** -> **Service** -> **Authorize Modules** from the DCAMCUT main menu to run the authorization process.

Type in Codes



Select the **Module** to unlock (see shipping form) and type in the related **Code**. The code can be entered in small or big characters. Accept each code with the **Authorize** button.

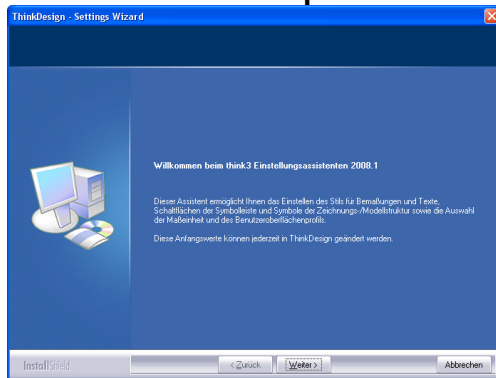
The file dcam.lic will be automatically created in the background within the installation directory e.g.

C:\DCAM\DCAMCUT\dcam.lic

Save this file to save time in case of re authorization of the product.

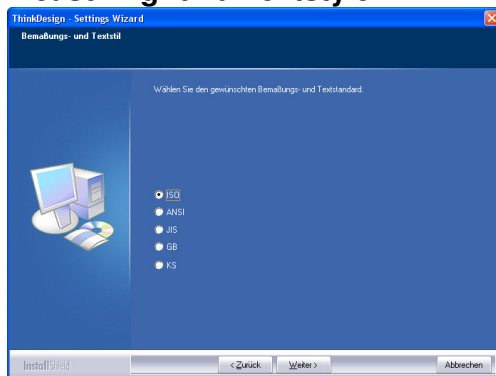
2.5 Basic Settings CAD-System CAD Parameter Setup

If you run DCAMCUT for the first time after installation the CAD Parameter Setup Wizard will appear on the screen. To start the setup process select **Next**.



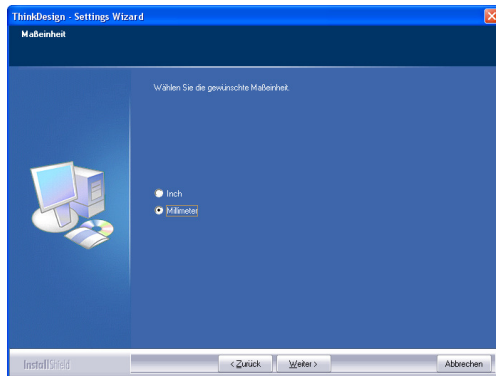
Measuring- und Textstyle

Choose the style for measurement and text in this dialog and choose **Next**.



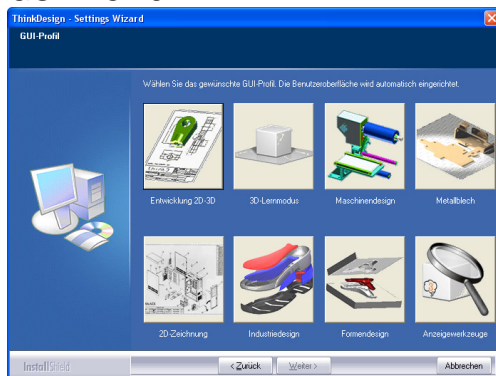
Measurement

Choose the measurement units and select **Next**.



GUI-Profil

Choose the GUI-Profile **Construction 2D-3D**. After this you will be automatically forwarded to the next dialog.

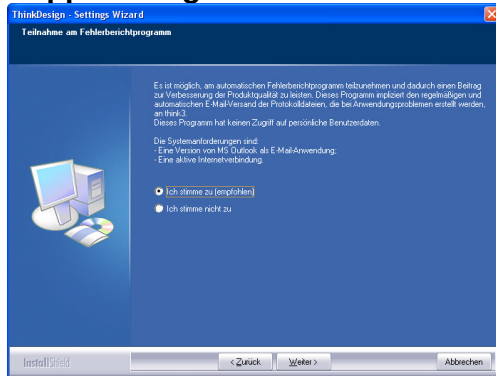


Button Bar & Menu Style



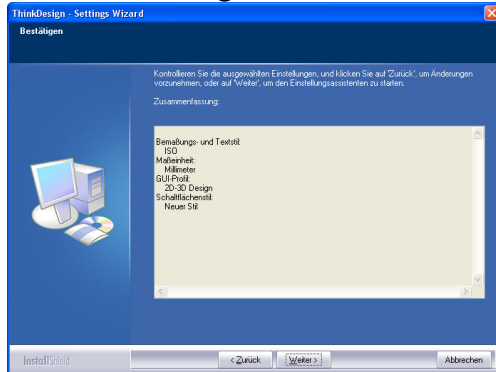
Choose the Button Bar & Menu Style you prefer. After this you will be automatically forwarded to the next dialog.

Support Program



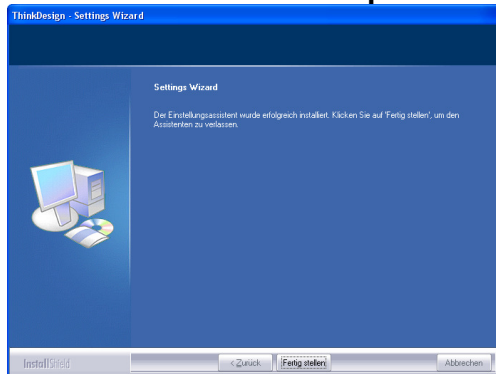
Select if you like to participate in the automatic Support Program and accept this by choosing the **Next** button.

Confirm Settings



Check again all settings and confirm with the **Next** button.

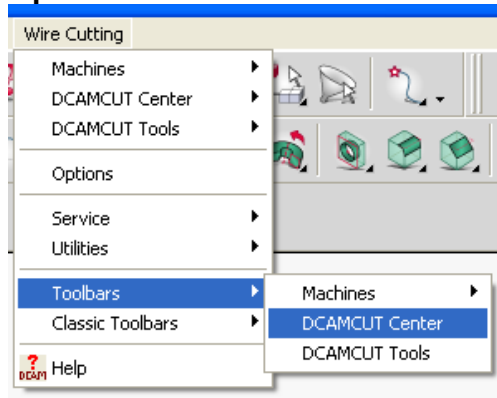
Exit CAD Parameter Setup



The system will prompt that all relevant Settings have been set up. Exit the Setup with the **Finish** button.

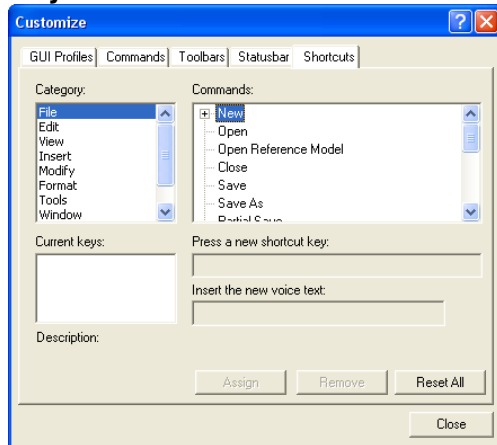
DCAMCUT will start up automatically after the Setup has been finished.

2.6 DCAMCUT Toolbar Open Toolbar



When DCAMCUT is running select **Wire Cutting > Toolbars -> DCAMCUT Center** from the main menu to show the Wire-EDM toolbar. Dock this toolbar where you like it to appear within the CAD System.

2.7 Keyboard Setting Keyboard Customization



To ease the use of commands that may often be used during the programming process you can specify keys from your keyboard to several CAD-Commands directly. To use a pre set up keyboard customization just copy the file **usrkb.cfg** from the *dcamcut\doc* folder of the Installation-DVD manually into the CAD Profiles directory.

Default path: *C:\Documents and Settings\<User>\ApplicationData\think3\thinkdesign\2008.x*

Detailed information regarding the keyboard customization is available in the main menu through:
Tools\Customize.