



# D=CAMCUT

The CAD/CAM solution in wire EDM



**Focused on  
progress**



## Perfectionists in what we do.

We specialize in developing programming systems for wire EDM. We require 100% and offer you future-oriented applications that, despite their complexity, are fantastically intuitive to use.

DCAMCUT is the ideal CAD/CAM solution for day-to-day requirements in wire EDM. Easy, effective, and efficient. The software acts as an interface between the CAD environment and the machine, ensuring that all production-related data for subsequent machining is supplemented and transferred to the machine in the form of an NC program.

The result is that all wire EDM programs are created quickly and securely on surfaces and volumetric solids. Moreover, convenient user navigation enables two significant benefits: less cost and effort in creating outstanding products and more valuable time.



## Precisely implementing your ideas and meeting your expectations.

Our NC processors are not post processors.

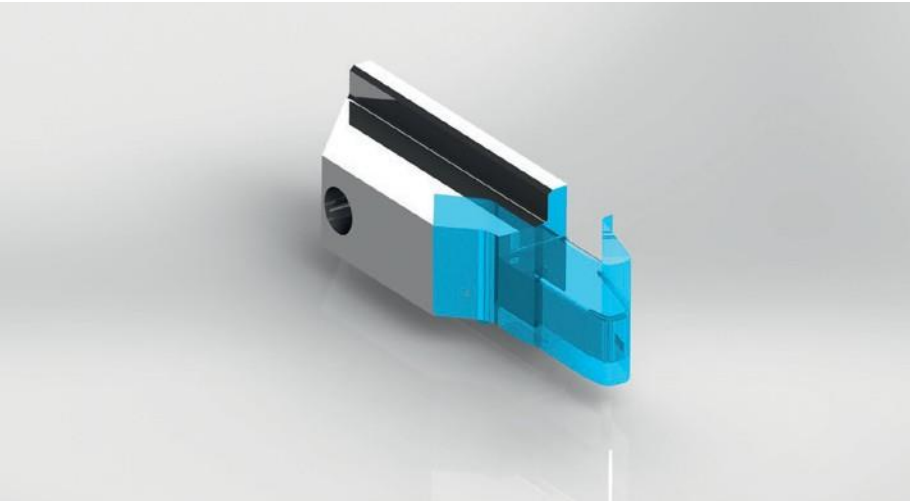
This difference goes beyond just the name. A post processor subsequently converts generated CAM strategies into a different format. It does not provide any guarantee that the NC code sent to the machine is precisely in line with your ideas and expectations.

Our unique NC processor technology avoids these kinds of weak spots; it checks each of its programming steps when it is created and even before the actual control code is output.

This enables time-consuming troubleshooting to be completed in the NC program itself, while the functional scope of the machine controller is fully utilized and you achieve results that meet your ideas and expectations.



Documentation is everything



## More security for your day-to-day work.

We don't leave anything to chance. You can localize and check the controller code created during programming with the NC browser whenever required.

Moreover, our solid simulation enables you to gain a clear overview of how the erosion (EDM) process will run and where and collisions may occur.

There are tangible advantages in day-to-day operations: waste and manufacturing errors are prevented and you benefit from maximum transparency.



## Extra performance: Good machine connection

It could all be so easy, and it is! We work closely with all leading machine manufacturers and guarantee that full support is available for all machines. DCAMCUT is fully equipped with technology databases and features control-oriented programming.

For you, this means clear time management which avoids additional work on the machine and the associated downtimes. An additional benefit is achieved through the option of importing not only cutting technologies provided by machine manufacturers but also user-defined technologies directly from the machine.





# Perspectives at a glance

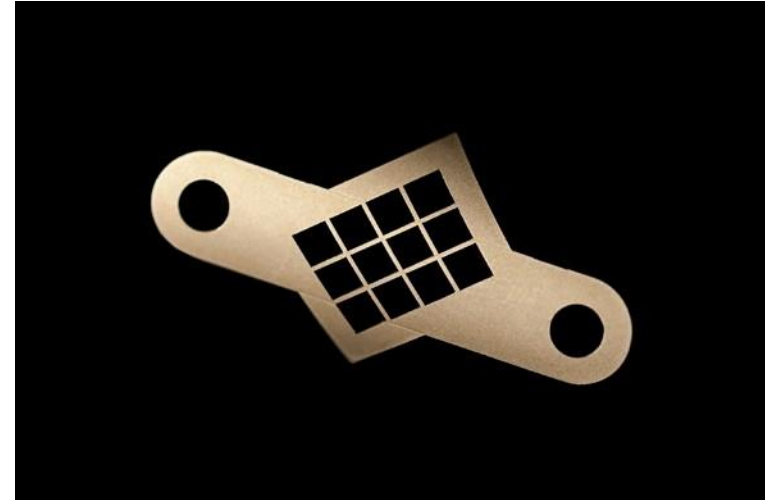




## Because convenience saves valuable time

Comfortable and efficient. Our DCAMCUT software impresses with its ease of handling and good performance. DCAMCUT can work directly with the native surface information of the model and can generate any wire EDM contour on 3D models that have been constructed in the corresponding CAD system.

Contours no longer need to be derived by cutting through the component and existing data no longer needs to be prepared for EDM. Instead, you can work conveniently and safely, as well as reliably testing the erodibility of geometries.



## Real added value: Multi-axis machining

New perspectives. With the aid of turning and tilting axes, DCAMCUT offers you innovative machining options which both expand the production spectrum and provide particular support for the functionality of your machine.

### **Simultaneous multi-axis machining:**

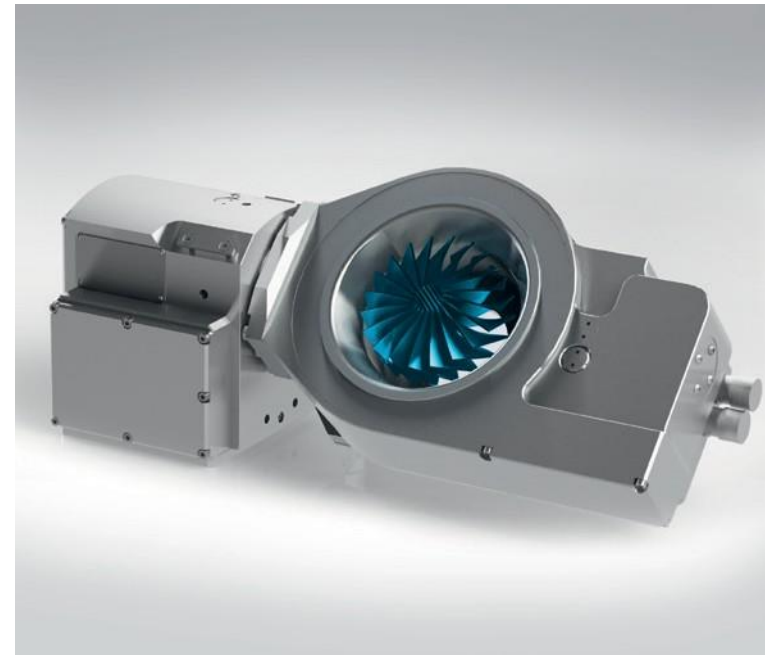
By using turning-tilting axes, even the most complex geometries can be produced under extreme angular positions with maximum precision.

### **Single-clamp EDM:**

With the aid of an additional moving axis, the workpiece can be machined with ease from all sides, meaning that manual clamping and calibration are no longer necessary.

### **Erosive grinding:**

Continuous material removal is achieved by rotating the workpiece, ensuring a particularly high level of surface quality. Even the smallest delicate parts can be machined safely since no physical forces act on the workpiece.





# A reliable outcome



## Positive collaboration: CAD file imports

Welcome compatibility. DCAMCUT already contains a great deal of direct interfaces without additional costs. This makes it child's play to import almost all data in the original format.



## Scalable and need-oriented:

Your unique production requirements determine the scope of functionality that you need. DCAMCUT adapts itself flexibly to your requirements in various stages of expansion, and of course all product expansion stages are available for both the solo system and the integrated solution.





## So that nothing is forgotten

The treasure trove of experience is everything. You just choose the template you will use to define the complete machining strategy. This not only reduces your working time and minimizes the rate of errors but also enables you to apply the strategy formulated once for various components.

As a result, the experience gained by all employees is pooled and available in the form of a knowledge database. Employee absence or holiday periods can therefore be compensated with ease. Additional flexibility and efficiency.



## Harnessing potential and improving quality

Additional functionality. Benefit from feature detection which makes specifying EDM contours significantly easier. Based on user-defined criteria, DCAMCUT is able to fully automatically detect contours to be machined.

You can also generate geometries step by step and with customized influence. As a result, you can determine at any time whether individual geometric elements or complete areas of the workpiece should be omitted. This way, you ensure that your EDM process creates dimensionally accurate production parts.



## Customized requirements meet versatility

You have demands and it is our goal to surpass them. This is why we design our product to be as versatile as possible so that we can also meet your specific production requirements.



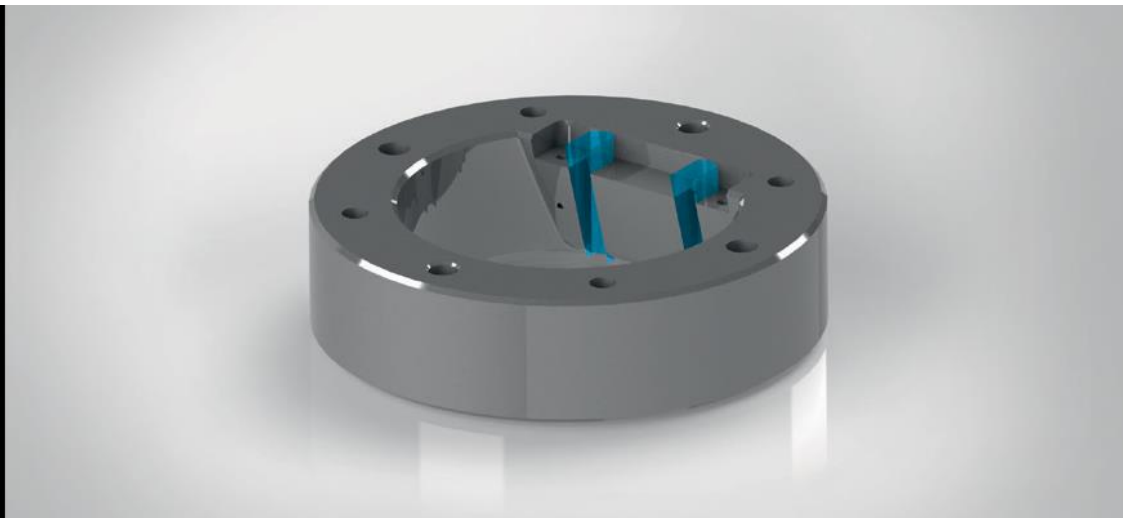
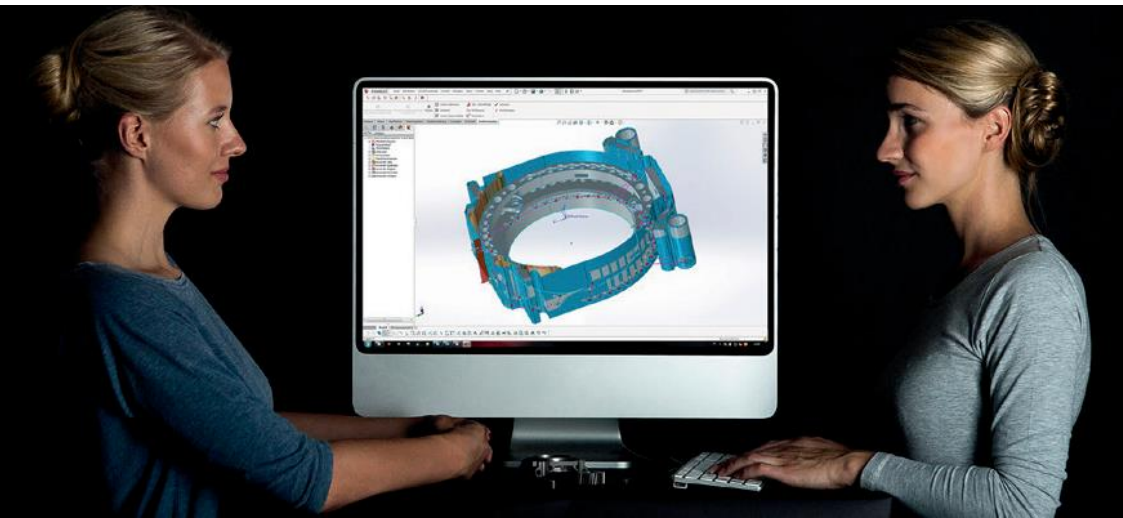
## The DCAMCUT solo system

The complete solution: The extremely efficient DCAMCUT solo system contains a fully-fledged CAD system and needs no additional construction environment. This enables you to experience the full DCAMCUT bandwidth combined with a high-performance CAD environment.



## DCAMCUT integration

Harmonious interaction. Do you already have a CAD system? DCAMCUT is designed to fully integrate into the environment of several market-leading CAD systems and offers you the entire functional diversity of wire EDM programming. Regardless of the version you choose, DCAMCUT always guarantees the highest degree of quality and performance in wire EDM.



The future in sight





## Implement tomorrow's solutions today

DCAM defines the future. Why? Because our software represents the product of our current success. We specialize in wire EDM and acknowledge how versatile and exciting the opportunities and developments in this field are. Our motivation is always characterized by creating user-friendly solutions for you, our customer.

Our goals include adapting interactively to new requirements and constantly rooting out new applications. Together with our network of strong, future-oriented partners, we create a clearly structured and highly flexible system environment whose functional scope covers all levels of modern CAM programming. We always keep pace with current developments, whilst shaping trends. Now and in the future.



## DCAM is wire EDM

Established in 1990 and specialized in wire EDM since 1994. We pool all our skills under the name DCAM, and are a leading manufacturer in the development of programming systems for wire EDM.



**DCAM GmbH** | Potsdamer Strasse 12B | D - 14513 Teltow Germany | Directors: Jens Franke, Adrian Fritsche  
Tel.: +49-89-81803-1501 | Fax: +49-89-81803-1519 | [www.dcam.de](http://www.dcam.de) | [info@dcam.de](mailto:info@dcam.de)